

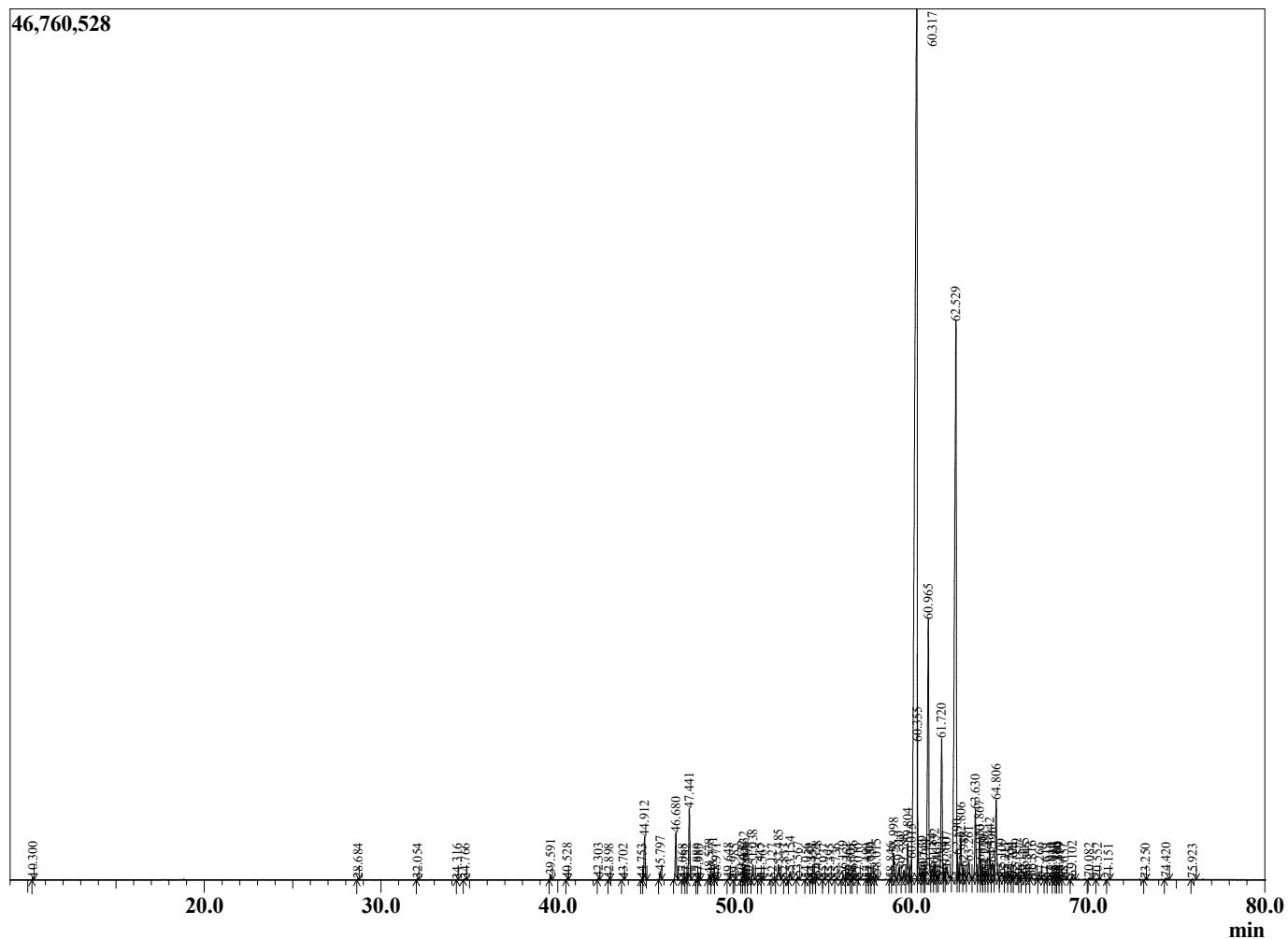
Sample Information

Sample Type : Essential Oil
 Sample Name : Santalum album
 Injection Volume : 0.10

Sandalwood India
 Lot# IDP35-PC
 Country: India



Chromatogram Santalum album



R.Time	Name	Area%
10.300	Santene	0.03
28.684	N-Furfuryl pyrrole	0.01
32.054	Unidentified	0.02
34.316	Unidentified	0.01
34.766	Teresantalic acid	0.02
39.591	Unidentified	0.11
40.528	Unidentified	0.02
42.303	Unidentified	0.03
42.898	7-epi-Sesquithujene	0.02
43.702	nortricyclo-eka-Santalic acid	0.01
44.753	alpha-Cedrene	0.01
44.912	alpha-Santalene	1.05
45.797	trans-alpha-Bergamotene	0.18
46.680	epi-beta-Santalene	1.10
47.068	Sesquisabinene	0.01
47.252	Unidentified	0.01
47.441	beta-Santalene	1.71
47.880	alpha-Acoradiene	0.01
47.985	beta-Acoradiene	0.02
48.578	gamma-Curcumene	0.12
48.771	Ar-Curcuemen	0.15
48.971	trans-beta-Bergamotene	0.03
49.648	Unidentified	0.03
49.985	alpha-Bisabolene	0.01
50.432	beta-Bisabolene	0.06
50.532	beta-Curcumene	0.29
50.600	(Z)-gamma-Bisabolene	0.02
50.765	Unidentified	0.01
51.038	Unidentified	0.35
51.415	Unidentified	0.03
51.567	(E)-gamma-Bisabolene	0.01
52.127	Unidentified	0.01
52.485	Unidentified + Sesquisabinene analog	0.46
52.833	Unidentified	0.01
53.154	Unidentified	0.19
53.567	Unidentified	0.06
54.056	Dendrolasin	0.01
54.352	Unidentified	0.03
54.455	Unidentified	0.01
54.678	Sesquisabinene hydrate analog	0.07
55.037	Unidentified	0.01
55.395	Unidentified	0.01
55.736	Unidentified	0.02
56.139	Unidentified	0.10
56.361	Unidentified	0.03
56.605	Unidentified	0.01
56.726	Unidentified	0.07
57.010	Unidentified	0.02
57.499	Unidentified	0.01
57.650	Unidentified	0.03
57.759	alpha-Acorenol	0.02
58.015	beta-Acorenol	0.13
58.846	Unidentified	0.02
58.998	Khusilal + Unidentified	0.74
59.310	(E)-alpha-Santalal	0.36
59.588	Z-alpha-Santalal	0.22

R.Time	Name	Area%
59.804	Unidentified	0.92
60.015	beta-Bisabolol	0.44
60.317	(Z)-alpha-Santalol	44.88
60.355	(Z)-alpha-Santalal	1.22
60.639	Unidentified	0.23
60.744	alpha-Bisabolol	0.09
60.965	(Z)-alpha-trans-Bergamotol	7.38
61.184	Unidentified	0.30
61.332	(E)-alpha-Santalol	0.36
61.465	Unidentified	0.03
61.720	(Z)-epi-beta-Santalol	3.69
61.841	Unidentified	0.18
62.007	(E)-alpha-trans-Bergamotol	0.42
62.529	(Z)-beta-Santalol	21.32
62.590	Unidentified	0.49
62.806	(Z)-Nuciferol	1.12
62.988	(E)-epi-beta-Santalol	0.30
63.261	Unidentified	0.52
63.630	(E)-beta-Santalol	1.73
63.867	Unidentified	1.08
63.920	Unidentified	0.38
64.129	Unidentified	0.16
64.239	Unidentified	0.21
64.442	(E)-Nuciferol	0.63
64.596	Unidentified	0.50
64.806	cis-Lanceol	2.19
65.109	Unidentified	0.17
65.311	Unidentified	0.03
65.551	Unidentified	0.05
65.708	Unidentified	0.01
65.939	Unidentified	0.13
66.157	Unidentified	0.01
66.415	Unidentified	0.13
66.545	Unidentified	0.05
66.816	Unidentified	0.06
67.266	Unidentified	0.02
67.619	Unidentified	0.01
67.910	Unidentified	0.02
68.034	Unidentified	0.04
68.180	Unidentified	0.01
68.300	Unidentified	0.05
68.419	Unidentified	0.03
68.657	Unidentified	0.02
69.102	Unidentified	0.08
70.082	Unidentified	0.05
70.552	Unidentified	0.02
71.151	Unidentified	0.01
73.250	Unidentified	0.01
74.420	Unidentified	0.04
75.923	Unidentified	0.01
107.707	Unidentified	0.02
		100.00